

GEOLOGICAL SKETCH MAP OF FLINDERS ISLAND

LEGEND

SEDIMENTARY

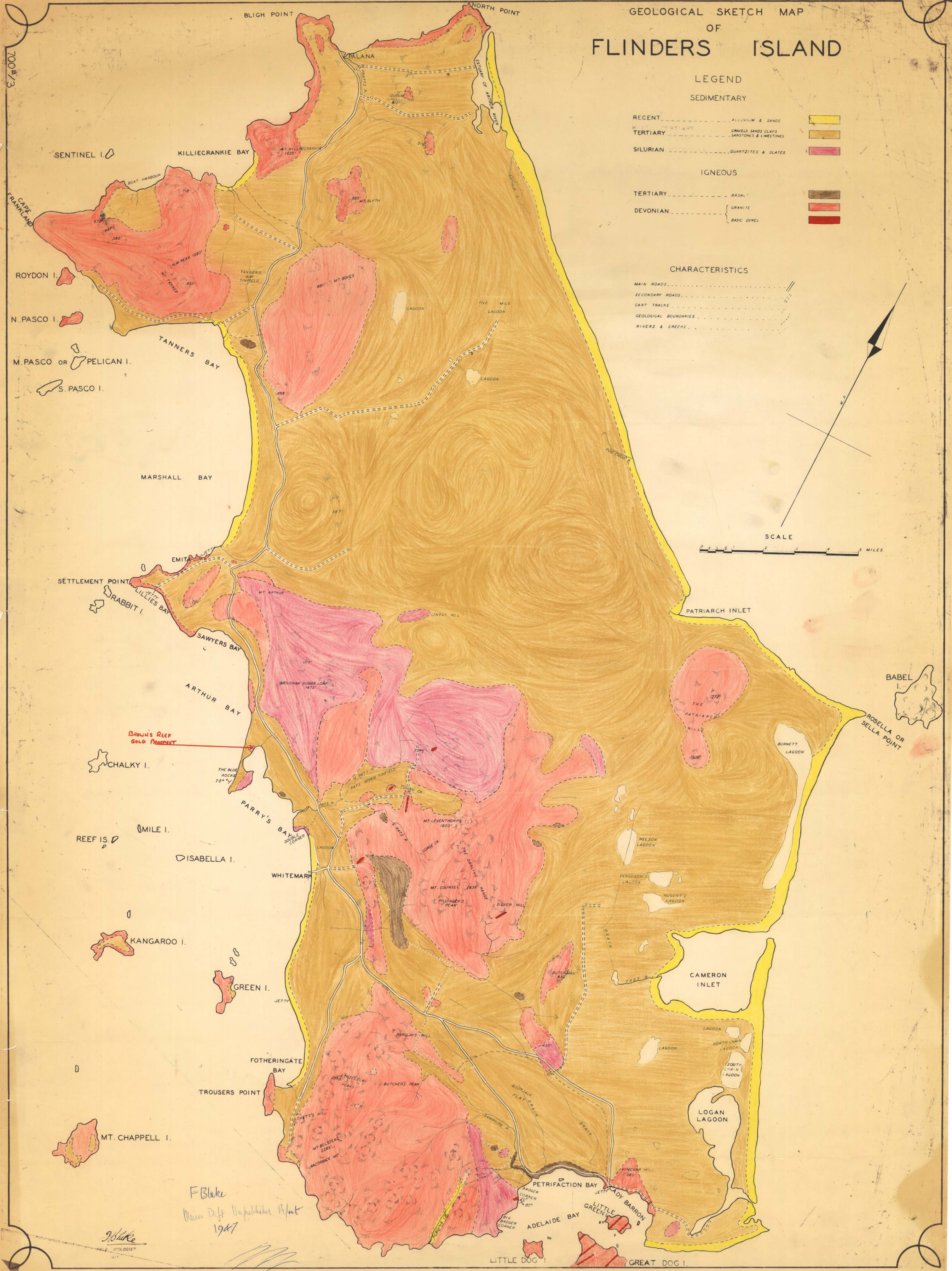
- RECENT ALLOVIUM & SANDS
- TERTIARY GRAVELS SANDS CLAYS
..... SANDSTONES & LIMESTONES
- SILURIAN QUARTZITES & SLATES

IGNEOUS

- TERTIARY BASALT
- DEVONIAN GRANITE
..... BASIC DYKES

CHARACTERISTICS

- MAIN ROADS - - - - -
- SECONDARY ROADS - - - - -
- CART TRACKS - - - - -
- GEOLOGICAL BOUNDARIES - - - - -
- RIVERS & CREEKS - - - - -



Brown's Reef Gold Prospect

F. Blake
Main Drift Unpublished Report
1947

F. Blake
FIELD GEOLOGIST