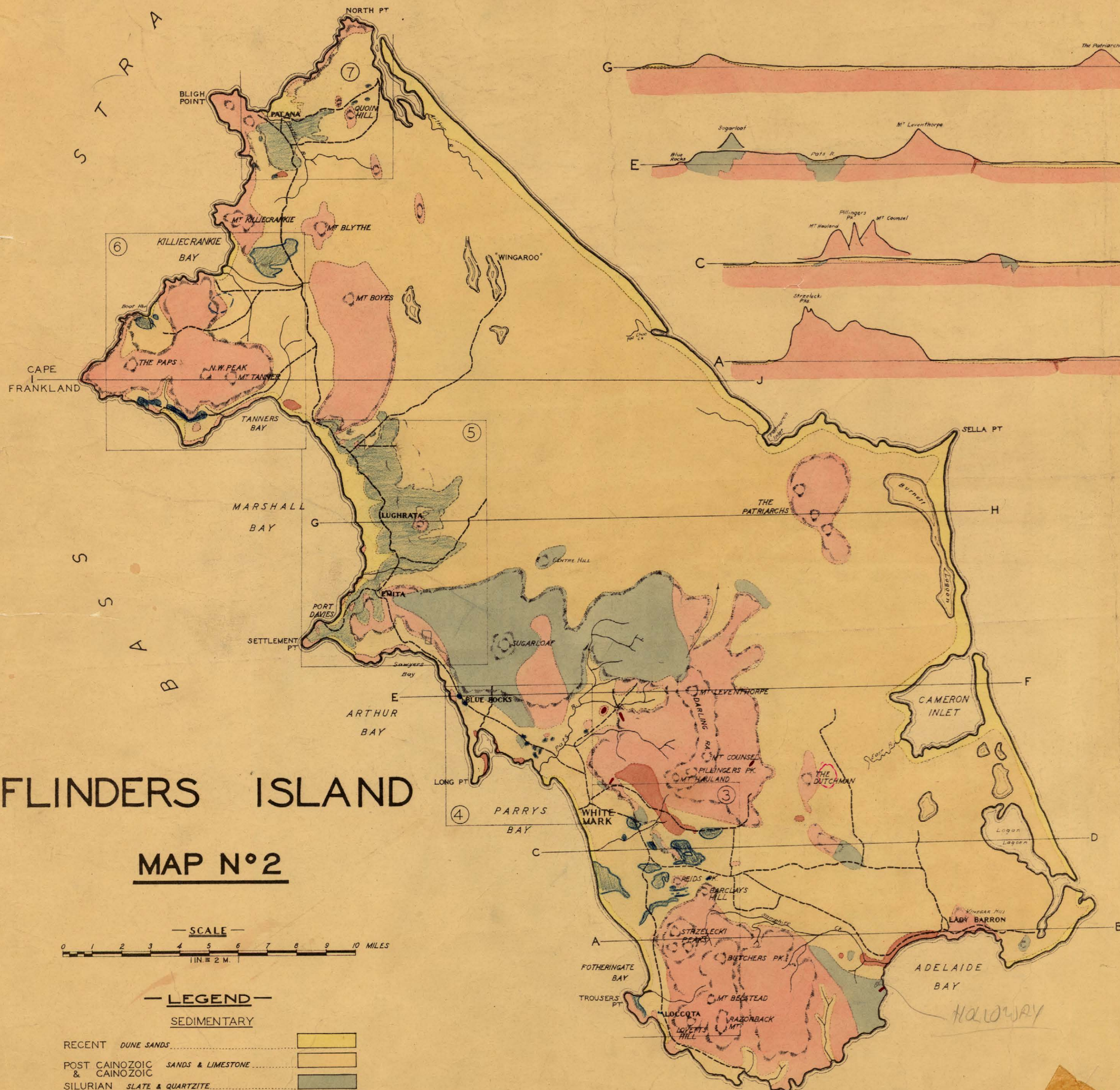
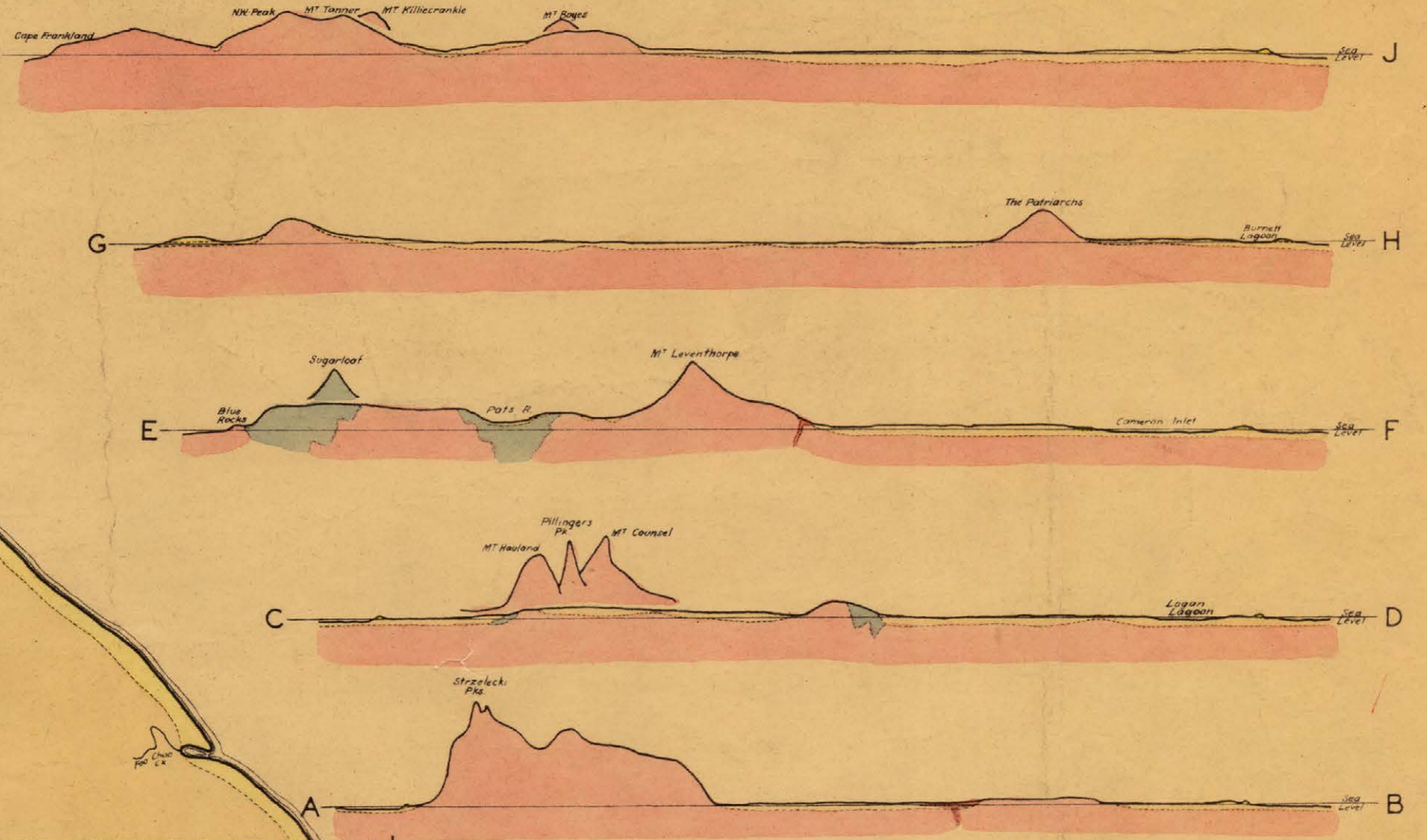
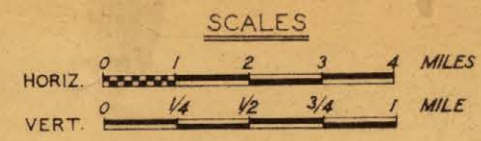
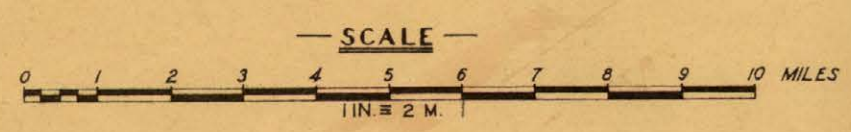


SECTIONS



FLINDERS ISLAND
MAP N°2



LEGEND

SEDIMENTARY

RECENT	DUNE SANDS	
POST CAINOZOIC & CAINOZOIC	SANDS & LIMESTONE	
SILURIAN	SLATE & QUARTZITE	

IGNEOUS

CAINOZOIC	BASALT	
DEVONIAN	BASIC DYKES	
DEVONIAN	GRANITE	

N° OF LARGE SCALE MAPS. ⑦

J. E. Broad B.A.
GEOLOGIST
AUG 1950